



DVI DL Splitter

USER MANUAL

ASKING FOR ASSISTANCE

Technical Support:

Telephone (818) 772-9100
(800) 545-6900

Fax (818) 772-9120

Technical Support Hours:

8:00 AM to 5:00 PM Monday through Friday PST

Write To:

Gefen Inc.
C/O Customer Service
20600 Nordhoff St
Chatsworth, CA 91311

support@gefen.com
www.gefen.com

Notice

Gefen Inc. reserves the right to make changes in the hardware, packaging and any accompanying documentation without prior written notice.

DVI DL Splitter is a trademark of Gefen Inc.

TABLE OF CONTENTS

- 1 Introduction
- 2 Features
- 3 Panel Descriptions
- 4 Connecting and Operating the DVI DL Splitter
- 5 Specifications
- 6 Warranty

INTRODUCTION

Congratulations on your purchase of the DVI DL Splitter. Your complete satisfaction is very important to us.

Gefen's line of KVM (Keyboard Video & Mouse), DVI, ADC, USB, switches, extenders, converters and hubs is designed to make computer use more comfortable, more productive and less expensive.

KVM switches allow access to multiple computers from a single keyboard, while the extenders give the user control over a computer up to 330 feet away from the work area.

The line offers solutions for noise, space and security concerns, data center control, information distribution, conference room presentation, and school and corporate training environments.

The DVI DL Splitter allows computers with Dual Link DVI graphic cards to be connected to one or two Dual Link DVI compatible monitors or projectors.

The DVI DL Splitter also lets you keep your Dual Link DVI monitor next to your computer, while adding a second Dual Link DVI display such as a projector or another Dual Link DVI monitor.

Our Commitment

Gefen will always offer the finest quality product at the best possible price. Included in that price is a lifetime of support from a team of outstanding engineers.

FEATURES

Features

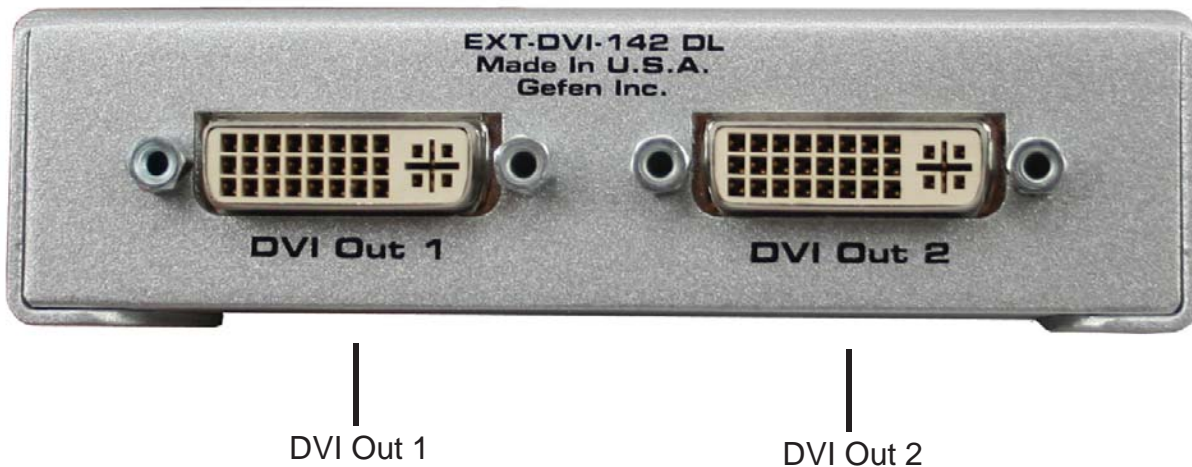
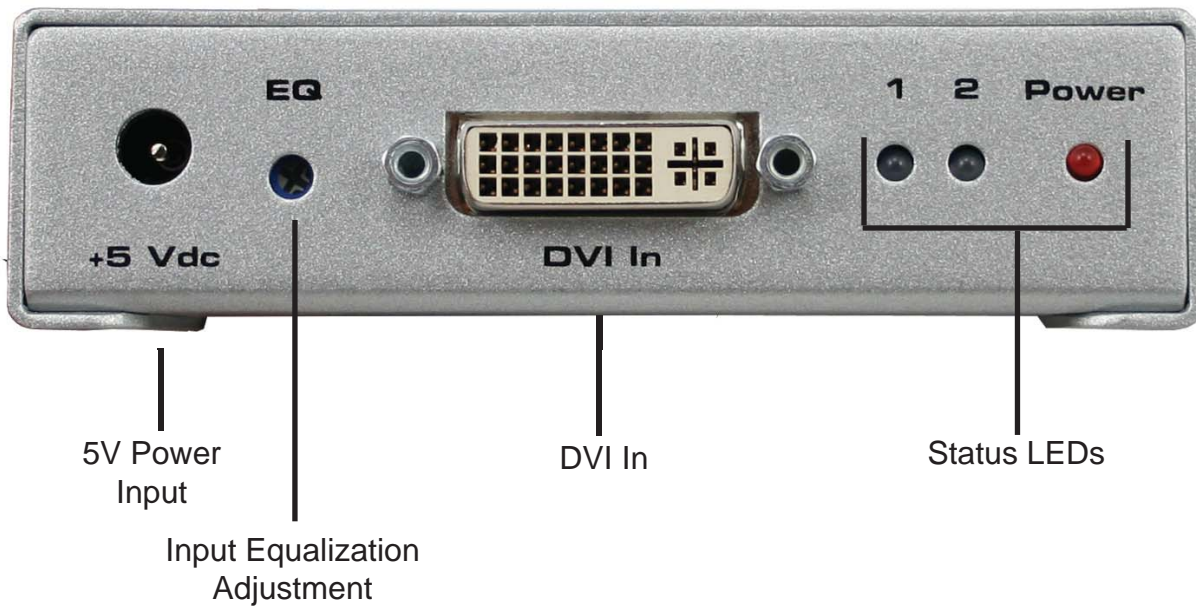
- Splits a Dual Link DVI signal to two or more Dual Link DVI displays
- Uses high quality DVI cables for connections
- Allows simultaneous display
- Supports 720P, 1080i, and 1080P resolutions
- Supports HDCP compliant devices for output one
- Supports DDWG standard for DVI compliant monitors
- Installs in seconds

Includes:

- (1) DVI DL Splitter
- (1) 6' Dual Link DVI cable (M-M)
- (1) 5V DC Power Supply
- (1) User's Manual



PANEL DESCRIPTIONS



CONNECTING AND OPERATING THE DVI DL SPLITTER

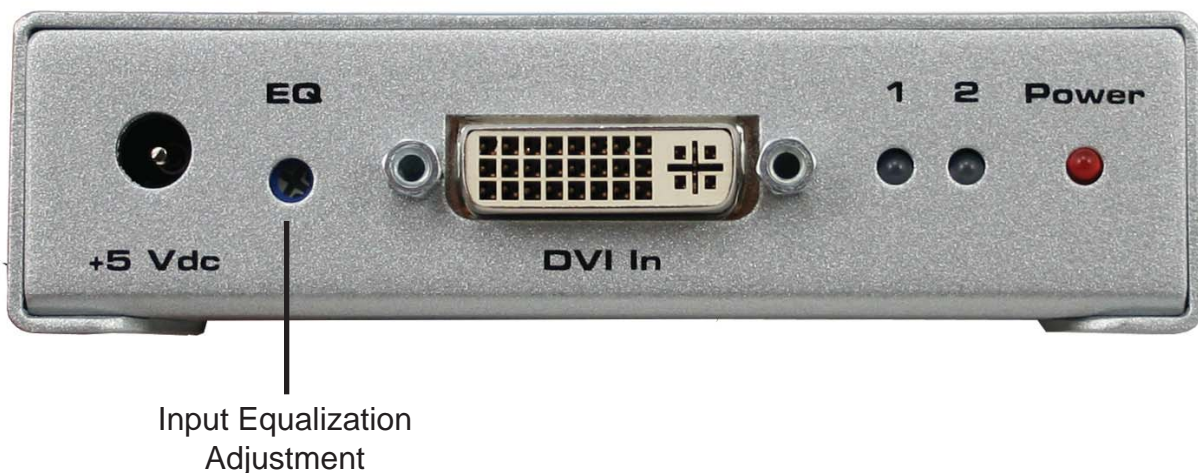
How to Connect the DVI DL Splitter to your devices

- 1- Connect the supplied Dual Link DVI cable from the back of the computer into the input of the DVI DL Splitter.
- 2- Connect the cable from your first display (monitor or projector) into the DVI Out 1 slot on the DVI DL Splitter. (this will be what the computer will recognize)
- 3- Connect the cable from your second display (monitor or projector) into the DVI Out 2 slot on the DVI DL Splitter.
- 4- Plug the 5v power supply into the DVI DL Splitter.
- 5- Plug the 5v wallmount power supply into the wall outlet.
- 6- Restart your computer only after you've made all the connections.
- 7- Adjust the EQ to resolve any imperfections in the image.

***Note:** Only output #1 of the DVI DL Splitter is HDCP pass-through.

EQUALIZATION CONTROL

External equalization control for the DVI DL Splitter

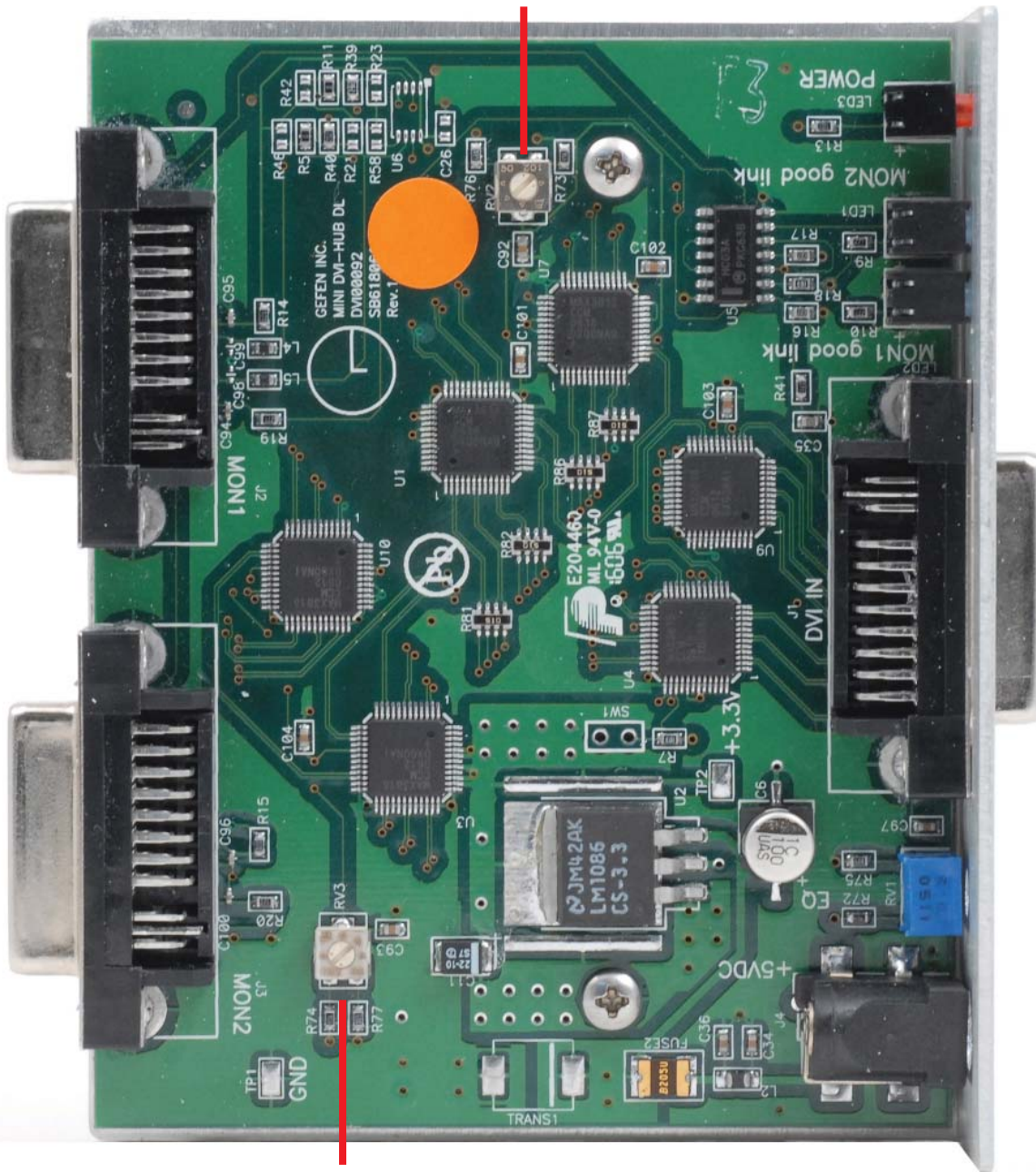


The external equalization knob can be used to balance out signal noise resulting from long cables for better picture quality. By turning the equalization knob counter-clockwise you will eliminate any noise and/or degradation in the signal. You should be able to find a "sweet spot" somewhere in the middle.

EQUALIZATION CONTROL

Internal equalization control for the DVI DL Splitter

Internal Equalization
Knob for DVI Output 1



Internal Equalization
Knob for DVI Output 2

The internal E.Q. knobs can be reached by removing the 6 hex nuts on the DVI connections and the 4 screws on the bottom of the unit.

These E.Q. knobs control the signal balance of the two DVI outputs.

SPECIFICATIONS

Video Amplifier Bandwidth	2 x 1.65 Gbps
Dual Link Range	3840 x 2400
Vertical Frequency Range	50 - 85 Hz
DVI Input/Output Connector	DVI-I (29 pin) female (Digital Only)
Power Consumption	20 Watts (max)
Power Supply	5V D
Dimensions	5" W x 1" H x 4" D
Shipping Weight	4 lbs

WARRANTY

Gefen Inc. warrants the equipment it manufactures to be free from defects in material and workmanship.

If equipment fails because of such defects and Gefen Inc. is notified within two (2) year from the date of shipment, Gefen Inc. will, at its option, repair or replace the equipment, provided that the equipment has not been subjected to mechanical, electrical, or other abuse or modifications.

Equipment that fails under conditions other than those covered will be repaired at the current price of parts and labor in effect at the time of repair. Such repairs are warranted for ninety (90) days from the day of reshipment to the Buyer.

This warranty is in lieu of all other warranties expressed or implied, including without limitation, any implied warranty or merchantability or fitness for any particular purpose, all of which are expressly disclaimed.

1. Proof of sale may be required in order to claim warranty.
2. Customers outside the US are responsible for shipping charges to and from Gefen.
3. Copper cables are limited to a 30 day warranty and cable must be free from any scratches, markings, and neatly coiled.

The information in this manual has been carefully checked and is believed to be accurate. However, Gefen Inc. assumes no responsibility for any inaccuracies that may be contained in this manual. In no event will Gefen Inc., be liable for direct, indirect, special, incidental, or consequential damages resulting from any defect or omission in this manual, even if advised of the possibility of such damages. The technical information contained herein regarding DVI DL Splitter features and specifications is subject to change without notice.